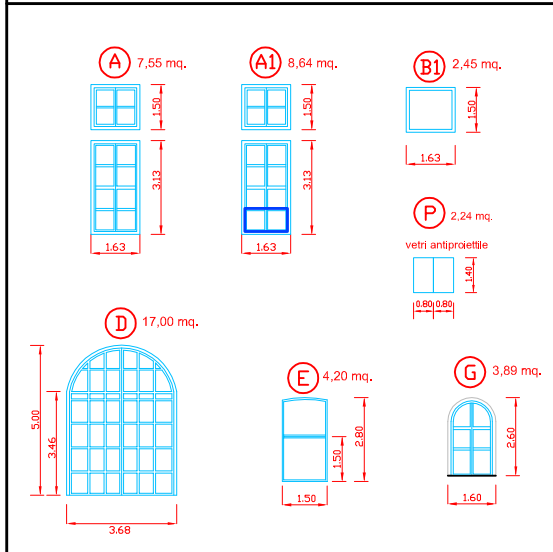
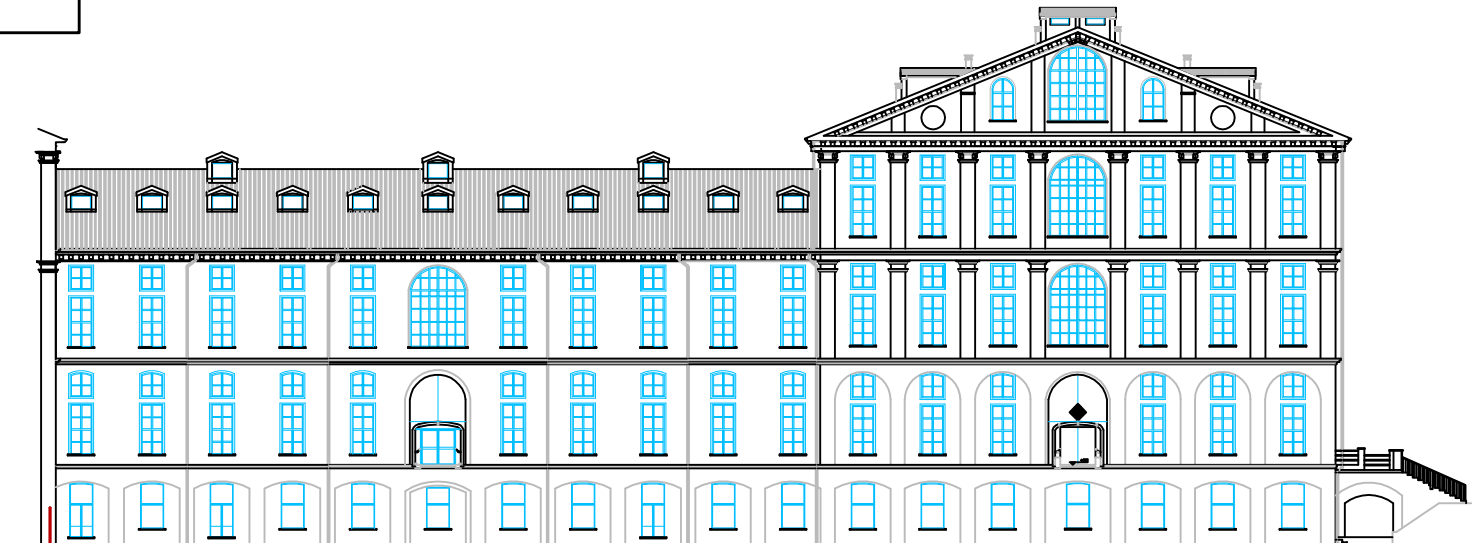


TIPOLOGIA FINESTRE

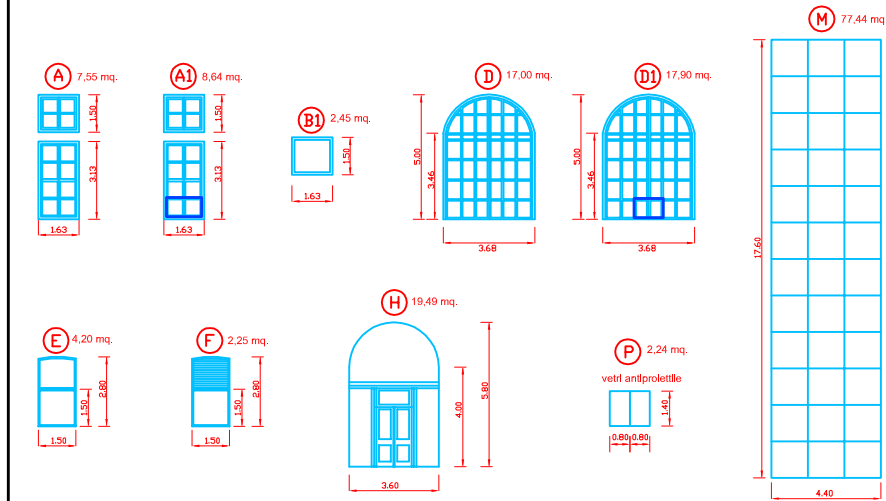


TIPO	N°	AREA mq.	AREA TOTALE (int.-est.) mq.
(A)	22 + 1 asilo	166,10+7,55 asilo	339,75
(A1)	11 + 4 asilo	95,04+34,56 asilo	224,64
(B1)	14	34,30	34,30
(D)	5 + 1 asilo	85,00+17,00 asilo	187,00
(G)	2	7,78	15,56
(E)	18	75,60	151,20
(P)	5	11,20	22,40
			<b>TOT. 974,85</b>

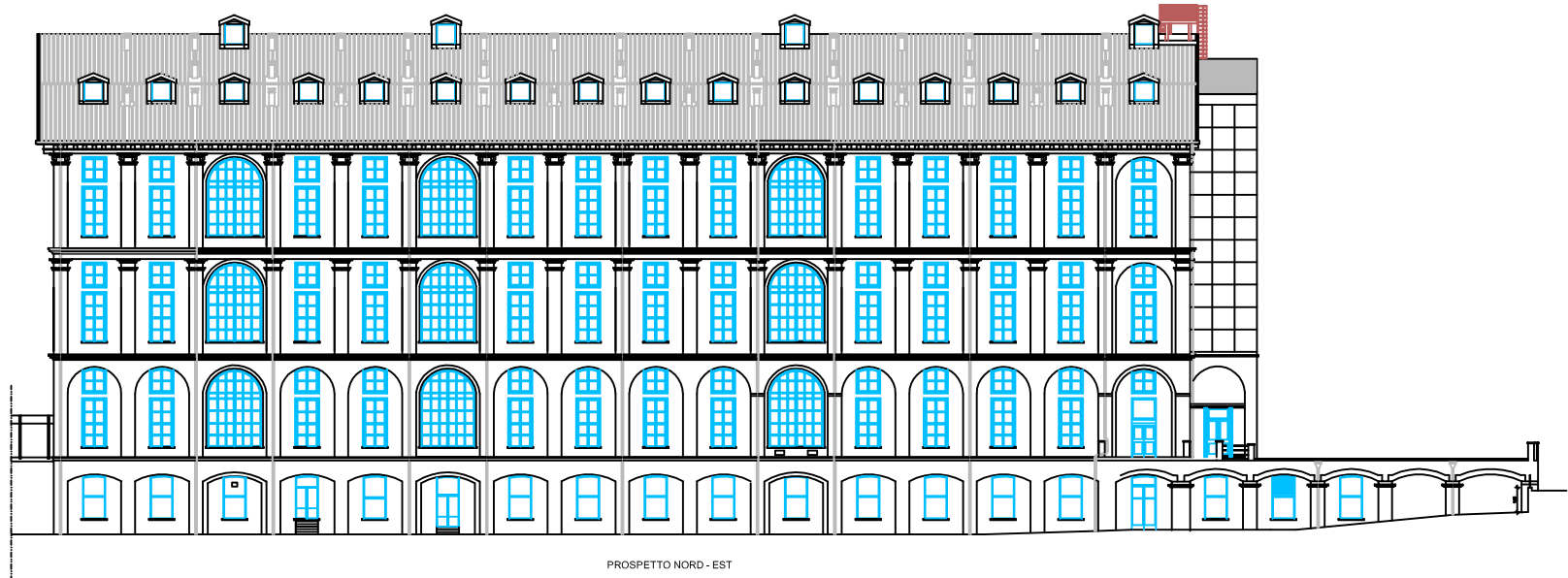
<b>TOTALE AREA PALAZZO mq.</b>
597,83
949,52
1247,02
974,85
<b>TOT. 3769,20</b>



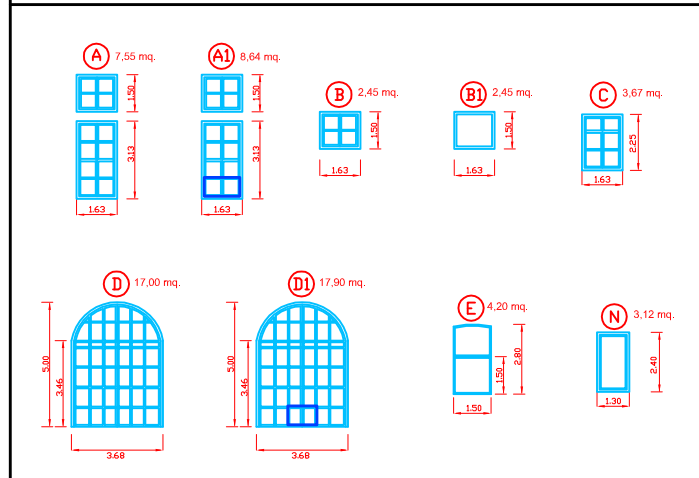
**TIPOLOGIA FINESTRE**



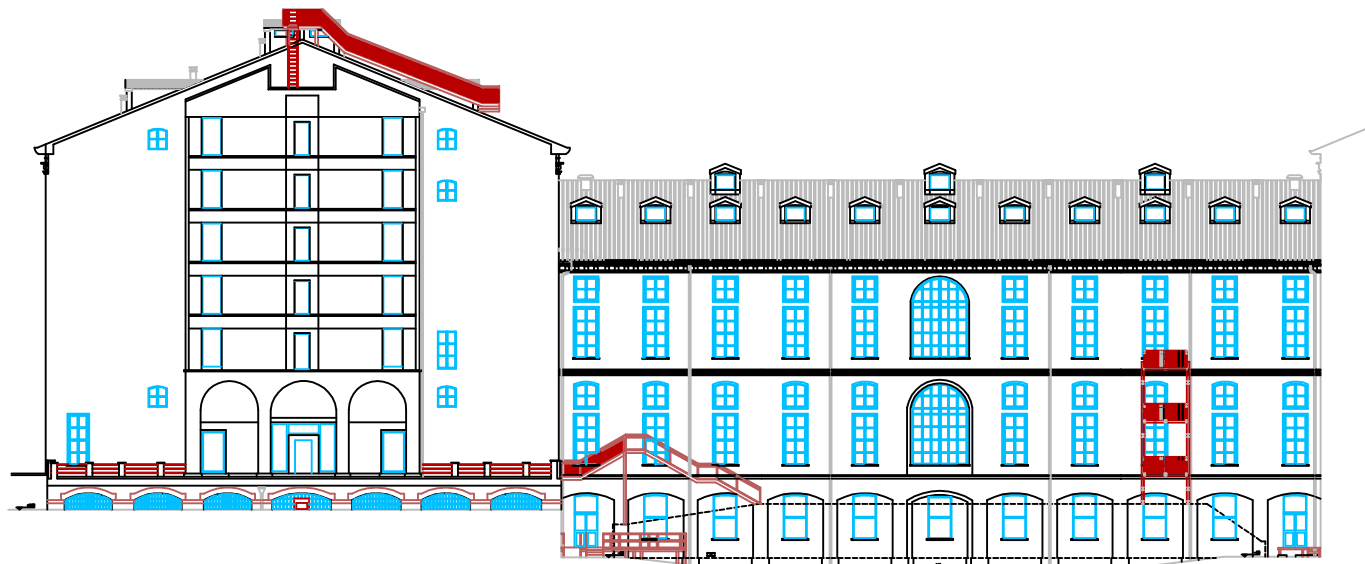
TIPO	N°	AREA mq.	AREA TOTALE (int.-est.) mq.
(A)	26	196,30	392,60
(A1)	13	112,32	224,64
(B1)	20	49,00	49,00
(D)	6	102,00	204,00
(D1)	3	53,70	107,40
(E)	15	63,00	126,00
(F)	4	9,00	18,00
(H)	1	19,49	38,98
(M)	1	77,44	77,44
(P)	2	4,48	8,96
<b>TOT.</b>			<b>1247,02</b>



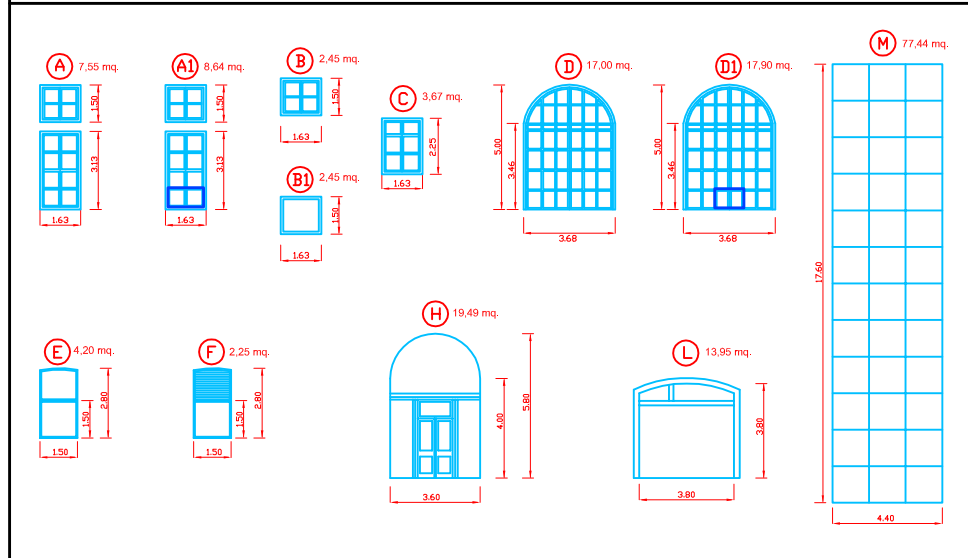
TIPOLOGIA FINESTRE



TIPO	N°	AREA mq.	AREA TOTALE (int.-est.) mq.
A	11 + 1 asilo	83,05+7,55 asilo	173,65
A1	5 + 4 asilo	43,20+34,56 asilo	120,96
B	5	12,25	24,50
B1	14	34,30	34,30
C	1	3,67	7,34
D	1	17,00	34,00
D1	1	17,90	35,80
E	11	46,20	92,40
N	12	37,44	74,88
			<b>TOT. 597,83</b>



TIPOLOGIA FINESTRE



TIPO	N°	AREA mq.	AREA TOTALE (int.-est.) mq.
(A)	18	135,90	271,80
(A1)	9	77,76	155,52
(B)	4	9,80	19,60
(B1)	20	49,00	49,00
(C)	2	7,34	14,68
(D)	4	68,00	136,00
(D1)	2	35,80	71,60
(E)	5	21,00	42,00
(F)	10	22,50	45,00
(H)	1	19,49	38,98
(L)	1	13,95	27,90
(M)	1	77,44	77,44
			<b>TOT. 949,52</b>

